

## Printable Treat Box Papercraft Kit

Each Kit Contains 4 full color

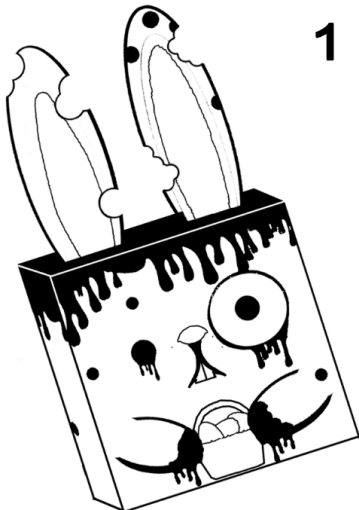
boxes:

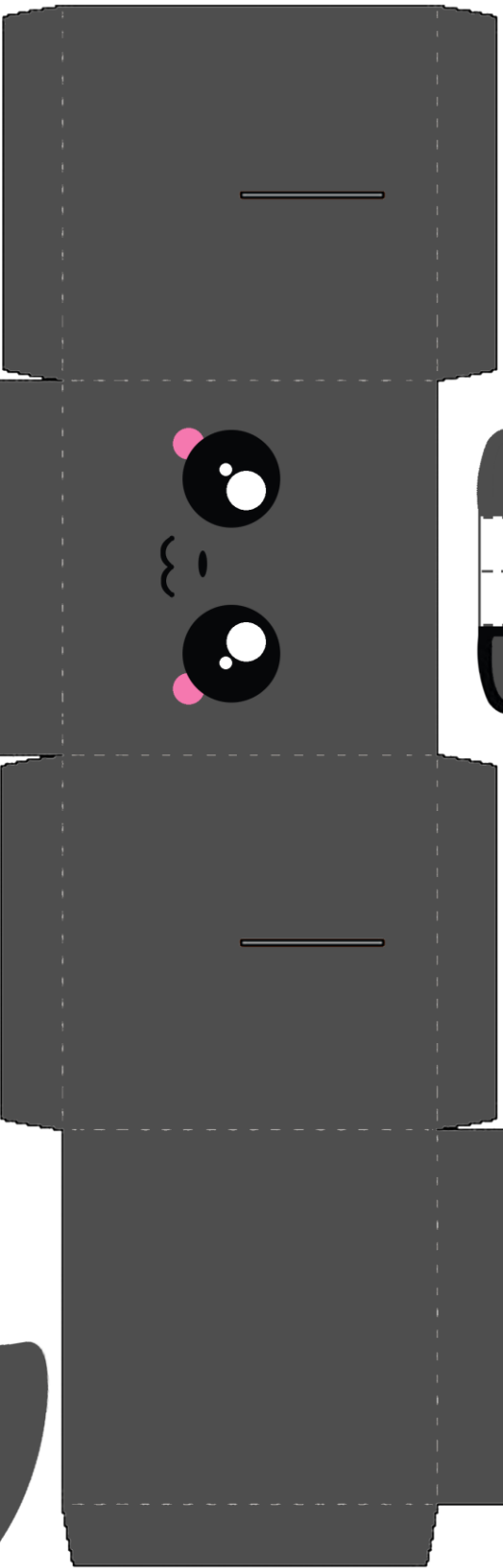
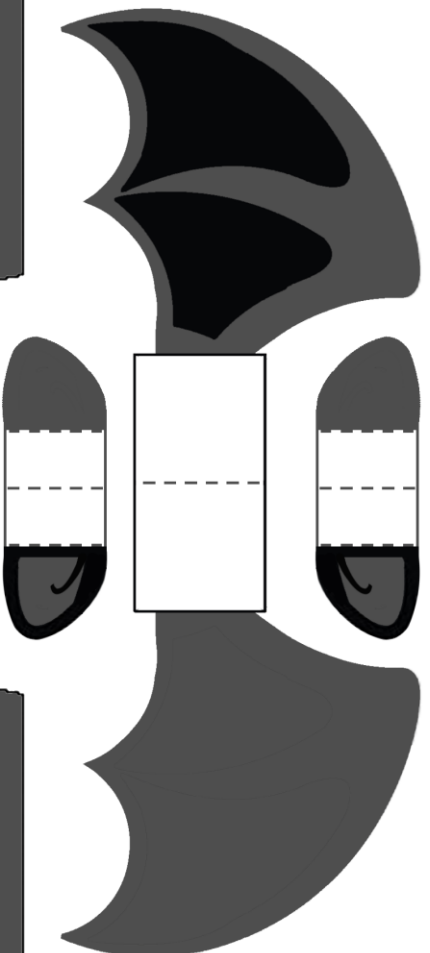
1 Bat box

1 Zombunny box

1 Round skull box

1 Coffin box





## CHIBI BAT BOX

Print box on card stock.

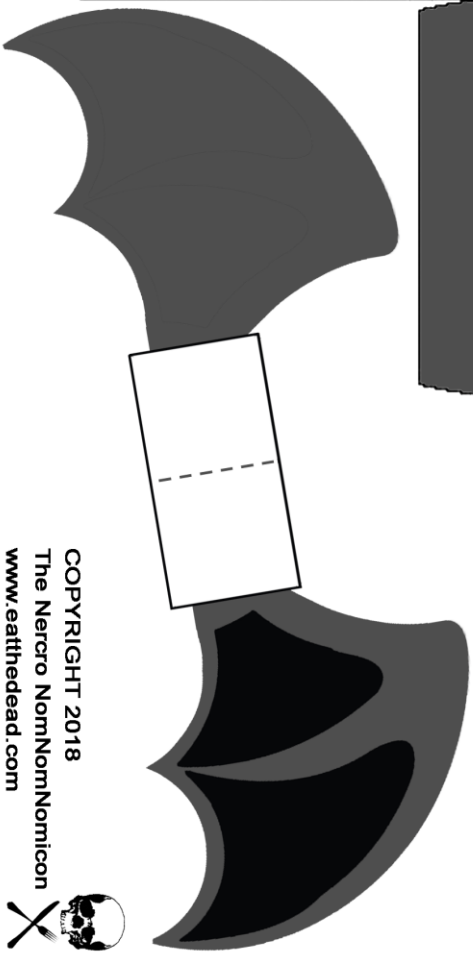
Cut along solid lines.

Decorate as desired.

To make the bat body, carefully fold sides towards center on dotted lines and tape or glue on inside to hold together.

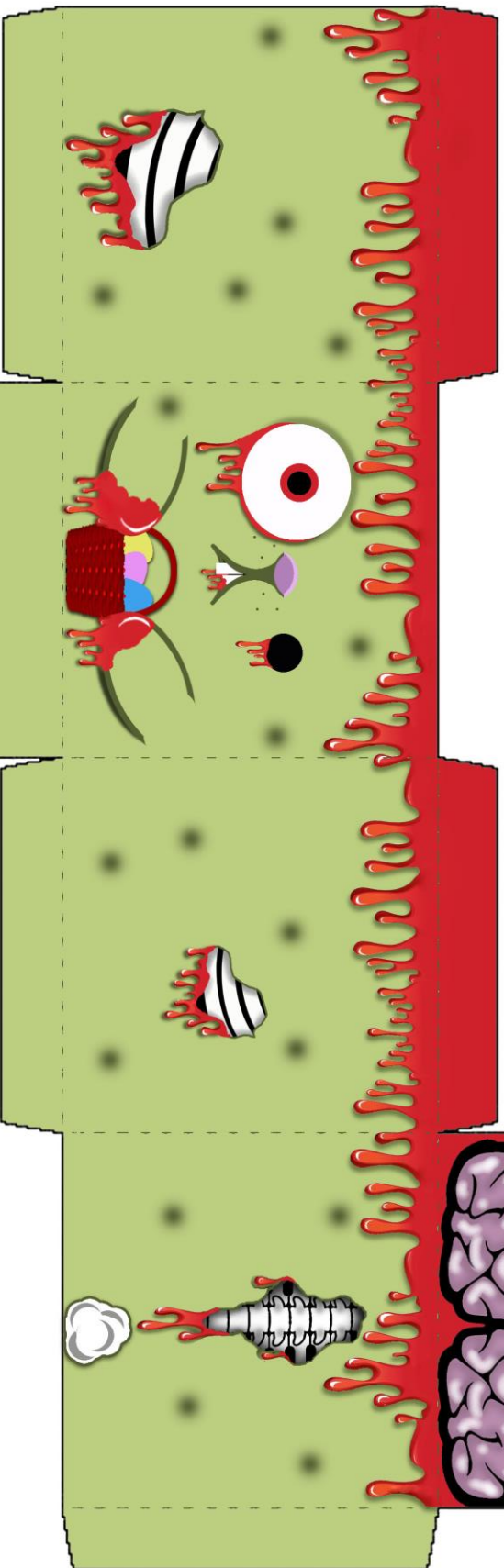
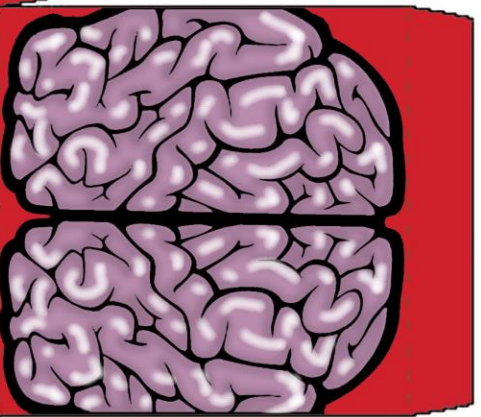
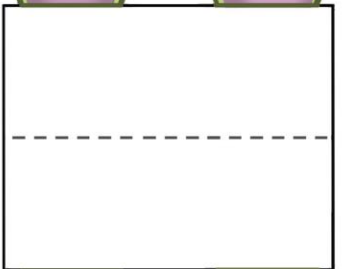
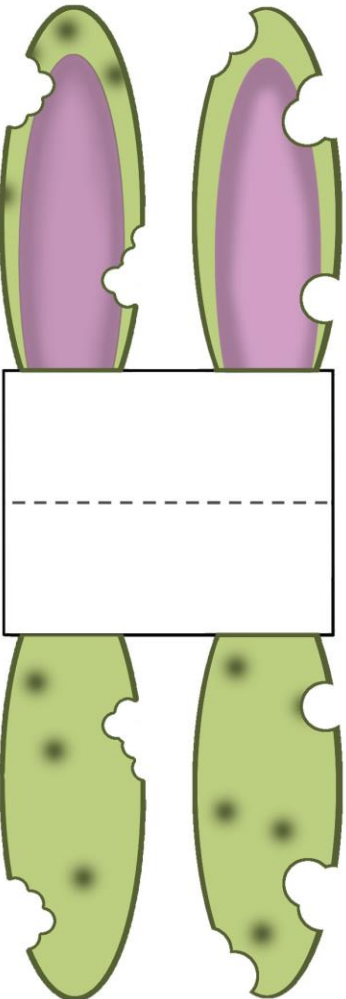
Make wings and ears by cutting along black lines and folding along dotted lines. Slide into corresponding slots on bat body and tape or glue into place.

[www.eatthedead.com](http://www.eatthedead.com)



COPYRIGHT 2018  
The Nercro NomNomNomicon  
[www.eatthedead.com](http://www.eatthedead.com)





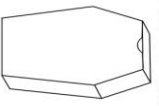
## ZOMBUNNY BOX

Print box on card stock.  
Cut along solid lines.  
Decorate as desired.

To make the body, carefully fold sides towards center on dotted lines and tape or glue on inside to hold together.  
Make the ears by cutting along black lines and folding along dotted lines. Attach the ears to the inside of the front of the box behind the face and tape or glue into place.

TOP LOAD  
COFFIN TREAT BOX

- = cut
- = fold
- o = glue
- x = no glue



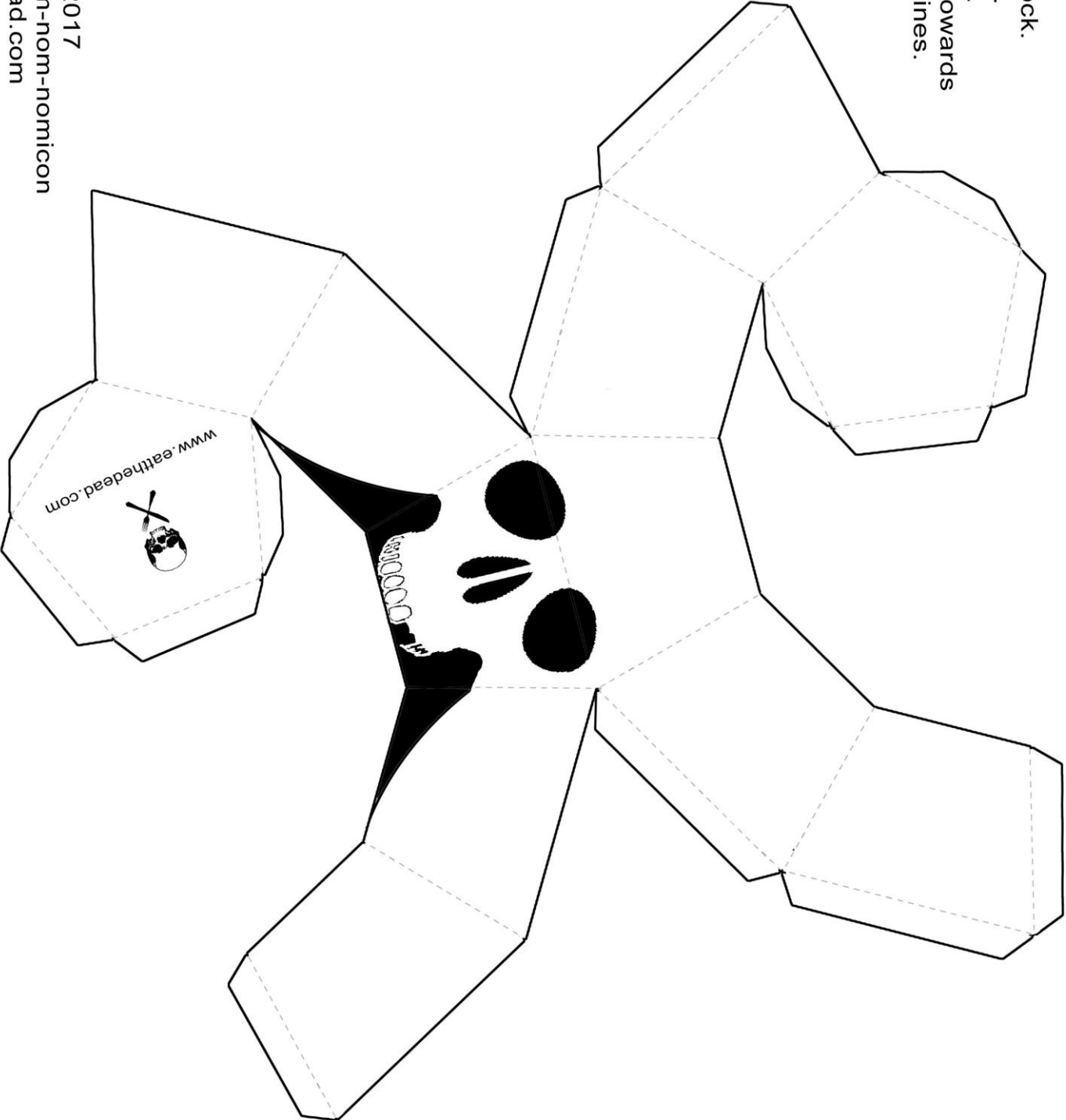
[www.eatthedead.com](http://www.eatthedead.com)

COPYRIGHT 2018  
The Nerco NomNomNomicon  
[www.eatthedead.com](http://www.eatthedead.com)



# SKULL BOX

Print box on card stock.  
Cut along solid lines.  
Decorate as desired.  
Carefully fold sides towards  
center along dotted lines.



COPYRIGHT 2017  
The Necro Nom-nom-nomicon  
[www.eatthedead.com](http://www.eatthedead.com)

# SKULL TRUFFLE BOX

Print box on card stock.

Cut along solid lines.

Decorate as desired.

Carefully fold sides towards center along dotted lines.

Tape corresponding pieces together.

For added strength along nose, add a small piece of tape to both sides where indicated after cutting out nose area.

----- = FOLD

———— = CUT

^ ^ ^ = TAPE

