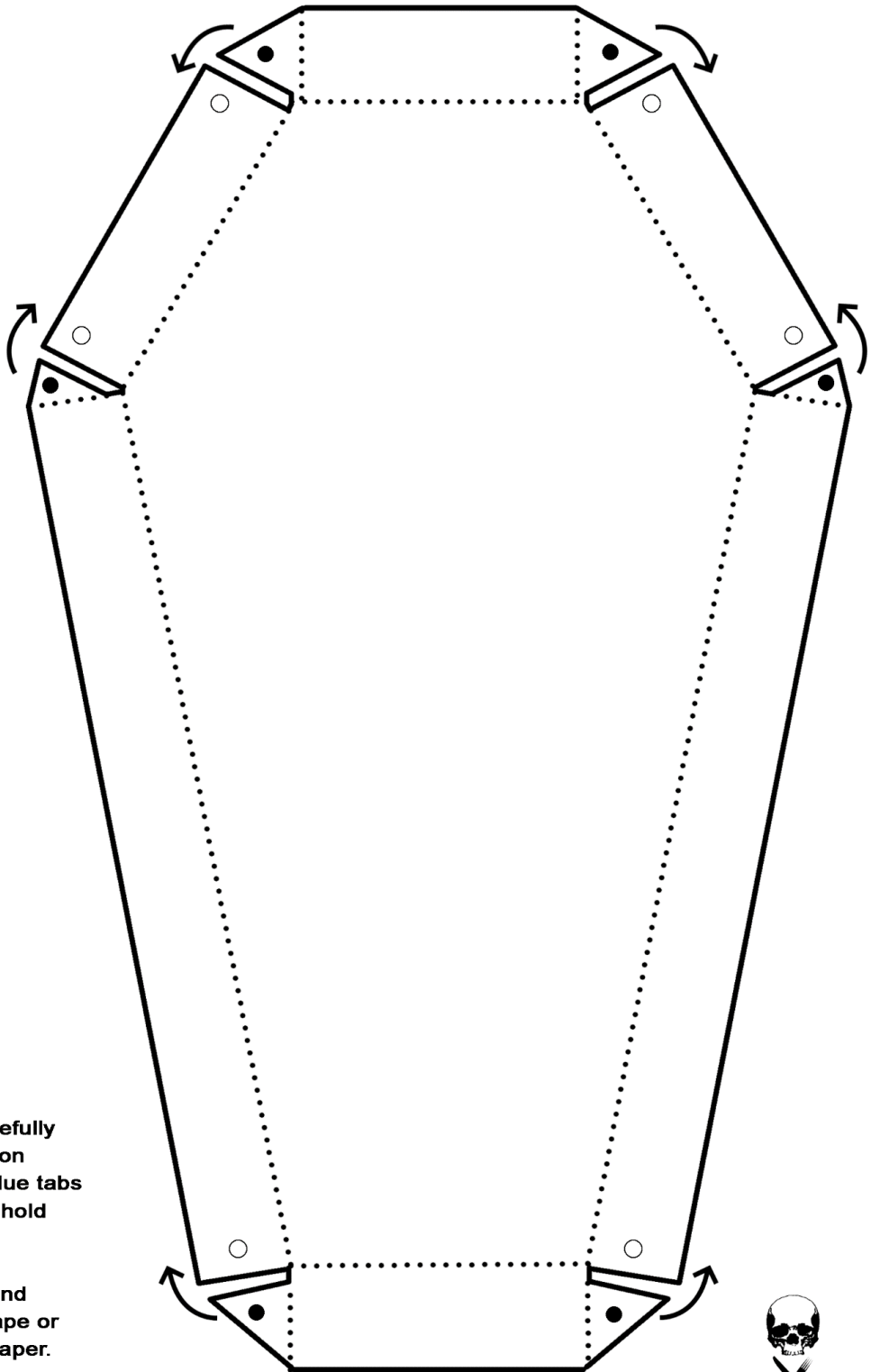


# Coffin Lid



## COFFIN BOX

Print box on card stock.

Cut along solid lines.

Decorate as desired.

To make the coffin lid, carefully fold sides towards center on dotted lines and tape or glue tabs to corresponding sides to hold together (● to ○.)

In order to hide the tabs and create a smoother look, tape or glue tabs to backside of paper.

Repeat for main coffin box.



# Coffin Box

